

Vegan Ginger Fudge

Serving Size

Gross weight	9502g
Nett weight after cooking	9502g
Serving size	50g
Number of servings	190.04

Pack Size

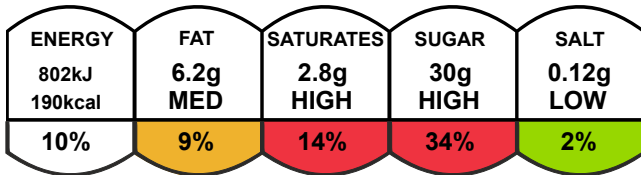
Pack size	100.0g
Number of servings	2

Nutrients

	per 100g	per 50 g serving
Energy	1604.4kJ	802.2kJ
Energy	380.4kcal	190.2kcal
Fat	12.4g	6.2g
of which saturates	5.6g	2.8g
Carbohydrate	67.7g	33.9g
of which sugars	60.8g	30.4g
Added Sugar	47.4g	23.7g
Fibre	0.1g	0.1g
Protein	0.3g	0.1g
Salt	0.23g	0.12g
Sodium	91.6mg	45.8mg

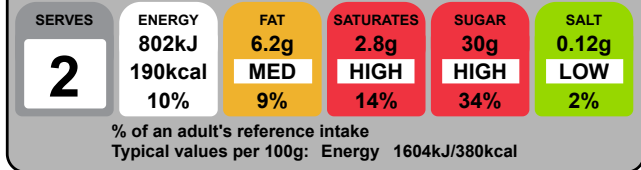
Graphics

per serving (50g)



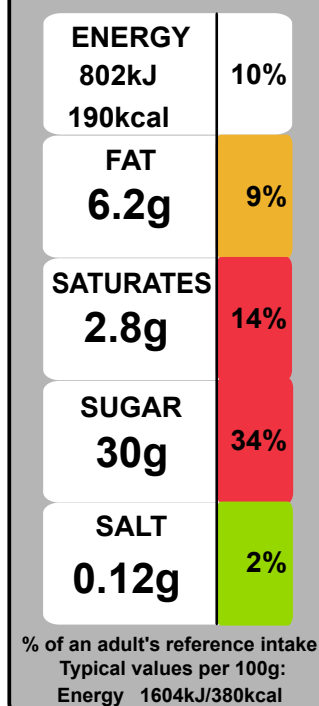
of your reference intake
Typical values per 100g: Energy 1604kJ/380kcal

per portion (50g)



% of an adult's reference intake
Typical values per 100g: Energy 1604kJ/380kcal

Per portion (50g)



per portion (50ml)



190kcal	HIGH	HIGH	HIGH	LOW
10%	9%	14%	34%	2%

of your reference intake
 Typical values per 100ml: Energy 1604kJ/380kcal

per portion (50ml)

SERVES	ENERGY	FAT	SATURATES	SUGAR	SALT
2	802kJ 190kcal 10%	6.2g HIGH 9%	2.8g HIGH 14%	30g HIGH 34%	0.12g LOW 2%

% of an adult's reference intake
 Typical values per 100ml: Energy 1604kJ/380kcal

Per portion (50ml)

ENERGY	10%
802kJ	
190kcal	
FAT	9%
6.2g	
SATURATES	14%
2.8g	
SUGAR	34%
30g	
SALT	2%
0.12g	

% of an adult's reference intake
 Typical values per 100g:
 Energy 1604kJ/380kcal

Typical values	per 100g	per 50g serving
Energy	1604kJ 380kcal	802kJ 190kcal
Fat	12g	6.2g
of which saturates	5.6g	2.8g
Carbohydrate	68g	34g
of which sugars	61g	30g
Protein	0.3g	0.1g
Salt	0.23g	0.12g

Nutrition Facts

2 servings per container
 Serving size 2oz (50g)

Amount per serving
Calories 190

% Daily Value*

Total fat	6g	8%
Saturated Fat	3g	14%
Trans Fat	0g	
Cholesterol	0mg	0%
Sodium	45mg	2%
Total Carbohydrate	34g	12%
Dietary Fiber	0g	0%
Total Sugars	30g	
Includes 24g Added Sugars		47%
Protein	0g	
Vitamin D	0.0mcg	0%
Calcium	9.7mg	0%
Iron	0.2mg	0%
Potassium	9.0mg	0%

*The % Daily Value (DV) tells you how much a nutrient in a serving of food contributes to a daily diet. 2,000 calories a day is used for general nutrition advice.

Nutrition Facts		
2 servings per container		
Serving size		2oz (50g)
Amount per serving		190
% Daily Value*		
Total fat	6g	8%
Saturated Fat	3g	14%
Trans Fat	0g	
Cholesterol	0mg	0%
Sodium	45mg	2%
Total Carbohydrate	34g	12%
Dietary Fiber	0g	0%
Total Sugars	30g	
Includes 24g Added Sugars		47%
Protein	0g	
Vit. D 0.0mcg 0% • Calcium 9.7mg 0%		
Iron 0.2mg 0% • Potas. 9.0mg 0%		

*The % Daily Value (DV) tells you how much a nutrient in a serving of food contributes to a daily diet. 2,000 calories a day is used for general nutrition advice.

Nutrition Facts		Amount / serving	% Daily Value*	Amount / serving	% Daily Value*		
2 servings per container		Total fat	6g	8%	Total Carbohydrate	34g	12%
Serving size		Saturated Fat	3g	14%	Dietary Fiber	0g	0%
2oz (50g)		Trans Fat	0g		Total Sugars	30g	
Calories		Cholesterol	0mg	0%	Includes 24g Added Sugars	47%	
per serving		Sodium	45mg	2%	Protein	0g	
190		Vitamin D 0.0mcg 0% • Calcium 9.7mg 0% • Iron 0.2mg 0% • Potassium 9.0mg 0%					
		Thiamin 0% • Riboflavin 1% • Niacin 0%					

Nutrition Facts		Amount / serving	% DV	Amount / serving	% DV		
2 servings per container		Total fat	6g	8%	Total Carbohydrate	34g	12%
Serving size		Saturated Fat	3g	14%	Dietary Fiber	0g	0%
2oz (50g)		Trans Fat	0g		Total Sugars	30g	
Calories		Cholesterol	0mg	0%	Incl. 0g Added Sugars	47%	
per serving		Sodium	45mg	2%	Protein	0g	
190		Vitamin D 0% • Calcium 0% • Iron 0% • Potassium 0%					

PER 2oz (50g) SERVING

190 CALORIES	3g SAT FAT 14% DV	45mg SODIUM 2% DV	30g SUGARS 5% DV
------------------------	--------------------------------	--------------------------------	-------------------------------

190

Calories

Ingredients and Allergens

Sugar, Glucose, **soya** Milk, Palm Oil, Fondant, Vegan Margarine (Vegetable Oil, Water, Emulsifier), Demerera, Glycerine, Caramel Flavouring, Ginger Powder, Soy Lecithin, Salt.

Allergen advice. For allergens, including cereals containing gluten, see ingredients in **bold**.

47.4%	23.7g	Sugar, white
14.7%	7.34g	Glucose liquid, BP

10.5%	5.26g	Milk, soya, non-dairy alternative to milk, unsweetened, fortified
8.42%	4.21g	Oil, palm
8.42%	4.21g	Candies, fondant, prepared-from-recipe
4.74%	2.37g	Vegan Magarine
2.74%	1.37g	Demerera
1.42%	0.71g	Glycerine
0.547%	0.274g	Caramel Flavouring
0.526%	0.263g	Spices, ginger, ground
0.474%	0.237g	Soya Lecithin (emulsifier)
0.168%	0.084g	Salt

Notes

generated by alacalc.com
15th February 2022 15:34