

Chocolate and Mint Fudge

Serving Size

Gross weight	10716.5g
Nett weight after cooking	10716.5g
Serving size	50g
Number of servings	214.33

Pack Size

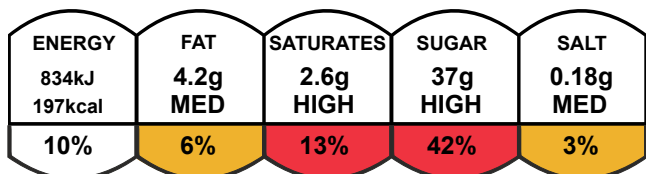
Pack size	100.0g
Number of servings	2

Nutrients

	per 100g	per 50 g serving
Energy	1668.9kJ	834.5kJ
Energy	394.1kcal	197.0kcal
Fat	8.3g	4.2g
of which saturates	5.1g	2.6g
Carbohydrate	78.2g	39.1g
of which sugars	74.9g	37.5g
Added Sugar	62.6g	31.3g
Fibre	0.6g	0.3g
Protein	2.4g	1.2g
Salt	0.36g	0.18g
Sodium	139.9mg	69.9mg

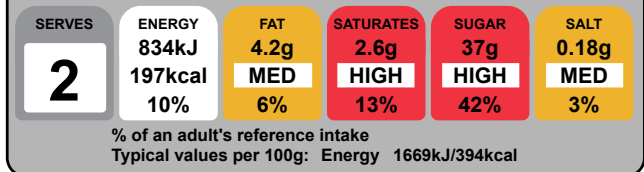
Graphics

per serving (50g)

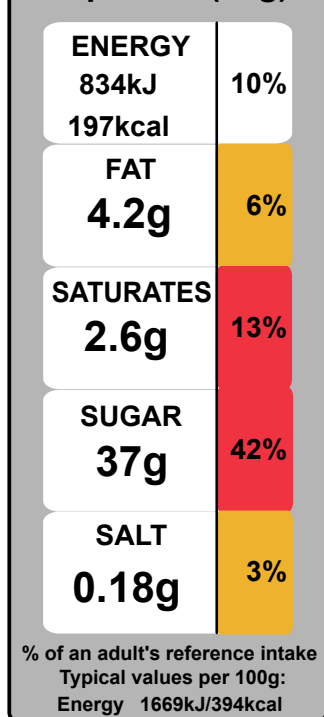


of your reference intake
Typical values per 100g: Energy 1669kJ/394kcal

per portion (50g)



Per portion (50g)



per portion (50ml)



197kcal	MED	HIGH	HIGH	MED
10%	6%	13%	42%	3%

of your reference intake
 Typical values per 100ml: Energy 1669kJ/394kcal

per portion (50ml)

SERVES	ENERGY	FAT	SATURATES	SUGAR	SALT
2	834kJ 197kcal 10%	4.2g MED 6%	2.6g HIGH 13%	37g HIGH 42%	0.18g MED 3%

% of an adult's reference intake
 Typical values per 100ml: Energy 1669kJ/394kcal

Per portion (50ml)

ENERGY	10%
834kJ	
197kcal	
FAT	6%
4.2g	
SATURATES	13%
2.6g	
SUGAR	42%
37g	
SALT	3%
0.18g	

% of an adult's reference intake
 Typical values per 100g:
 Energy 1669kJ/394kcal

Typical values	per 100g	per 50g serving
Energy	1669kJ 394kcal	834kJ 197kcal
Fat	8.3g	4.2g
of which saturates	5.1g	2.6g
Carbohydrate	78g	39g
of which sugars	75g	37g
Protein	2.4g	1.2g
Salt	0.36g	0.18g

Nutrition Facts

2 servings per container
 Serving size 2oz (50g)

Amount per serving
Calories 200

% Daily Value*

Total fat	4g	5%
Saturated Fat	2.5g	13%
Trans Fat	0g	
Cholesterol	10mg	3%
Sodium	70mg	3%
Total Carbohydrate	39g	14%
Dietary Fiber	0g	1%
Total Sugars	37g	
Includes 31g Added Sugars		63%
Protein	1g	
Vitamin D	0.0mcg	0%
Calcium	40mg	4%
Iron	0.4mg	2%
Potassium	71mg	2%

*The % Daily Value (DV) tells you how much a nutrient in a serving of food contributes to a daily diet. 2,000 calories a day is used for general nutrition advice.

Nutrition Facts		
2 servings per container		
Serving size		2oz (50g)
Amount per serving		200
Calories		
% Daily Value		
Total fat	4g	5%
Saturated Fat	2.5g	13%
Trans Fat	0g	
Cholesterol	10mg	3%
Sodium	70mg	3%
Total Carbohydrate	39g	14%
Dietary Fiber	0g	1%
Total Sugars	37g	
	Includes 31g Added Sugars	63%
Protein	1g	
Vit. D	0.0mcg	0%
Calcium	40mg	4%
Iron	0.4mg	2%
Potas.	71mg	2%

*The % Daily Value (DV) tells you how much a nutrient in a serving of food contributes to a daily diet. 2,000 calories a day is used for general nutrition advice.

Nutrition Facts		Amount / serving	% Daily Value*	Amount / serving	% Daily Value*		
2 servings per container		Total fat	4g	5%	Total Carbohydrate	39g	14%
Serving size		Saturated Fat	2.5g	13%	Dietary Fiber	0g	1%
2oz (50g)		Trans Fat	0g		Total Sugars	37g	
Calories		Cholesterol	10mg	3%	Includes 31g Added Sugars	63%	
per serving		Sodium	70mg	3%	Protein	1g	
200		Vitamin D	0.0mcg	0%	Calcium	40mg	4%
		Thiamin	1%	Riboflavin	4%	Niacin	2%
		Iron	0.4mg	2%	Potassium	71mg	2%

Nutrition Facts		Amount / serving	% DV	Amount / serving	% DV		
2 servings per container		Total fat	4g	5%	Total Carbohydrate	39g	14%
Serving size		Saturated Fat	2.5g	13%	Dietary Fiber	0g	1%
2oz (50g)		Trans Fat	0g		Total Sugars	37g	
Calories		Cholesterol	10mg	3%	Incl. 0g Added Sugars	63%	
per serving		Sodium	70mg	3%	Protein	1g	
200		Vitamin D	0%	Calcium	4%	Iron	2%
		Potassium	2%				

PER 2oz (50g) SERVING

200 CALORIES	2.5g SAT FAT 13% DV	70mg SODIUM 3% DV	37g SUGARS 5% DV
------------------------	----------------------------------	--------------------------------	-------------------------------

200

Calories

Ingredients and Allergens

Sugar, Condensed **Milk**, Glucose, Butter (**Milk**), Chocolate, Syrup, Cocoa Powder, Dried **Milk**, Glycerine, Salt, Peppermint Extract.

Allergen advice. For allergens, including cereals containing gluten, see ingredients in **bold**.

60.7%	30.3g	Sugar, white
15.8%	7.89g	Milk, condensed, whole, sweetened

6.5%	3.25g	Glucose liquid, BP
6.44%	3.22g	Butter, salted
2.8%	1.4g	Chocolate, dark, 70-85% cacao solids
2.58%	1.29g	Syrup, golden
2.16%	1.08g	Cocoa powder
1.61%	0.803g	Milk, skimmed, dried, fortified
1.26%	0.63g	Glycerine
0.126%	0.063g	Salt
0.093%	0.047g	Peppermint Extract

Notes

generated by alacalc.com
15th February 2022 15:19