

Vegan Vanilla Fudge

Serving Size

Gross weight	8970g
Nett weight after cooking	8970g
Serving size	50g
Number of servings	179.4

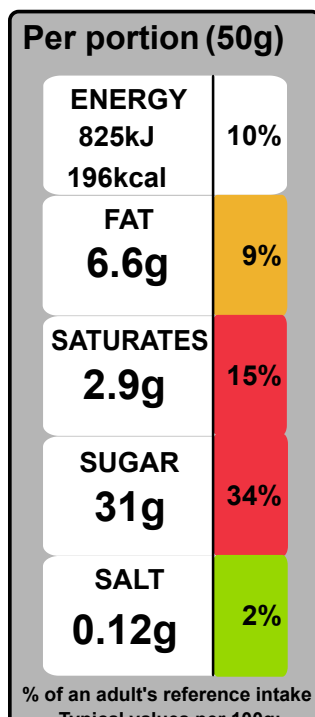
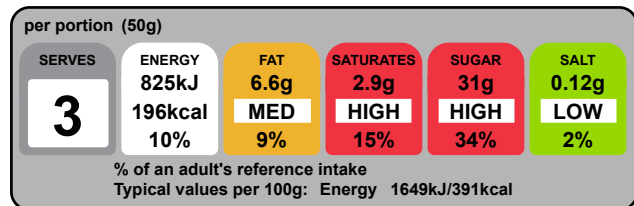
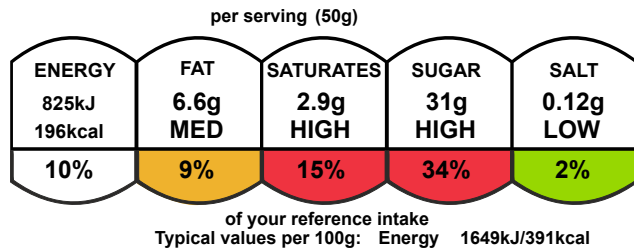
Pack Size

Pack size	150.0g
Number of servings	3

Nutrients

	per 100g	per 50 g serving
Energy	1649.2kJ	824.6kJ
Energy	391.1kcal	195.5kcal
Fat	13.1g	6.6g
of which saturates	5.9g	2.9g
Carbohydrate	68.8g	34.4g
of which sugars	61.7g	30.9g
Added Sugar	44.6g	22.3g
Fibre	0.1g	0.0g
Protein	0.3g	0.1g
Salt	0.25g	0.12g
Sodium	96.8mg	48.4mg

Graphics



Typical values per 100g:
Energy 1649kJ/391kcal

per portion (50ml)

ENERGY	FAT	SATURATES	SUGAR	SALT
825kJ 196kcal	6.6g HIGH	2.9g HIGH	31g HIGH	0.12g LOW
10%	9%	15%	34%	2%

of your reference intake
Typical values per 100ml: Energy 1649kJ/391kcal

per portion (50ml)

SERVES	ENERGY	FAT	SATURATES	SUGAR	SALT
3	825kJ 196kcal 10%	6.6g HIGH 9%	2.9g HIGH 15%	31g HIGH 34%	0.12g LOW 2%

% of an adult's reference intake
Typical values per 100ml: Energy 1649kJ/391kcal

Per portion (50ml)

ENERGY 825kJ 196kcal	10%
FAT 6.6g	9%
SATURATES 2.9g	15%
SUGAR 31g	34%
SALT 0.12g	2%

% of an adult's reference intake
Typical values per 100g:
Energy 1649kJ/391kcal

Typical values	per 100 g	per 50g serving
Energy	1649kJ 391kcal	825kJ 196kcal
Fat	13g	6.6g
of which saturates	5.9g	2.9g
Carbohydrate	69g	34g
of which sugars	62g	31g
Protein	0.3g	0.1g
Salt	0.25g	0.12g

Nutrition Facts

3 servings per container	
Serving size	2oz (50g)
Amount per serving	
Calories	200
% Daily Value*	
Total fat	7% 8%

Saturated Fat	3g	15%
Trans Fat	0g	
Cholesterol	0mg	0%
Sodium	50mg	2%
Total Carbohydrate	34g	13%
Dietary Fiber	0g	0%
Total Sugars	31g	
Includes 22g Added Sugars		45%
Protein	0g	
Vitamin D	0mcg	0%
Calcium	10mg	0%
Iron	0mg	0%
Potassium	6mg	0%

*The % Daily Value (DV) tells you how much a nutrient in a serving of food contributes to a daily diet. 2,000 calories a day is used for general nutrition advice.

Nutrition Facts

3 servings per container
Serving size 2oz (50g)

Amount per serving
Calories 200

% Daily Value*

Total fat	7g	8%
Saturated Fat	3g	15%
Trans Fat	0g	
Cholesterol	0mg	0%
Sodium	50mg	2%
Total Carbohydrate	34g	13%
Dietary Fiber	0g	0%
Total Sugars	31g	
Includes 22g Added Sugars		45%
Protein	0g	
Vit. D	0mcg	0%
Calcium	10mg	0%
Iron	0mg	0%
Potas.	6mg	0%

*The % Daily Value (DV) tells you how much a nutrient in a serving of food contributes to a daily diet. 2,000 calories a day is used for general nutrition advice.

Nutrition Facts	Amount / serving	% Daily Value*	Amount / serving	% Daily Value*	
	Total fat	7g	8%	Total Carbohydrate	34g 13%
3 servings per container Serving size 2oz (50g) Calories per serving 200	Saturated Fat	3g	15%	Dietary Fiber	0g 0%
	Trans Fat	0g		Total Sugars	31g
	Cholesterol	0mg	0%	Includes 22g Added Sugars	45%
	Sodium	50mg	2%	Protein	0g
	Vitamin D	0mcg	0%	Calcium	10mg 0%
	Thiamin	0%		Riboflavin	1%
				Niacin	0%
				Iron	0mg 0%
				Potassium	6mg 0%

*The % Daily Value (DV) tells you how much a nutrient in a serving of food contributes to a daily diet. 2,000 calories a day is used for general nutrition advice.

Nutrition Facts	Amount / serving	% DV	Amount / serving	% DV	
	Total fat	7g	8%	Total Carbohydrate	34g 13%
3 servings per container Serving size 2oz (50g) Calories per serving 200	Saturated Fat	3g	15%	Dietary Fiber	0g 0%
	Trans Fat	0g		Total Sugars	31g
	Cholesterol	0mg	0%	Incl. 0g Added Sugars	45%
	Sodium	50mg	2%	Protein	0g
	Vitamin D	0%		Calcium	0%
				Iron	0%
				Potassium	0%

PER 2oz (50g) SERVING

200 CALORIES	3g SAT FAT 15% DV	50mg SODIUM 2% DV	31g SUGARS 5% DV
------------------------	--------------------------------	--------------------------------	-------------------------------

200

Calories



Ingredients and Allergens

Sugar, Glucose, **Soya** Milk, Palm Oil, Fondant, Vegan Margarine (Vegetable Oil, Water, Emulsifier), Demerara Sugar, Glycerine, Caramel Flavouring, Soy Lecithin, Vanilla Extract, Salt.
Allergen advice. For allergens, including cereals containing gluten, see ingredients in **bold**.

44.6%	22.3g	Sugar, white
15.5%	7.77g	Glucose liquid, BP
11.1%	5.57g	Milk, soya, non-dairy alternative to milk, unsweetened, fortified
8.92%	4.46g	Oil, palm
8.92%	4.46g	Candies, fondant, prepared-from-recipe
5.02%	2.51g	Vegan Margarine
2.9%	1.45g	Sugar, Demerara
1.51%	0.753g	Glycerine
0.58%	0.29g	Caramel Flavouring
0.502%	0.251g	Soya Lecithin (emulsifier)
0.201%	0.1g	Vanilla extract
0.178%	0.089g	Salt

Notes