

Vegan Fudge Caramel

Serving Size

Gross weight	10106.5g
Nett weight after cooking	10106.5g
Serving size	50g
Number of servings	202.13

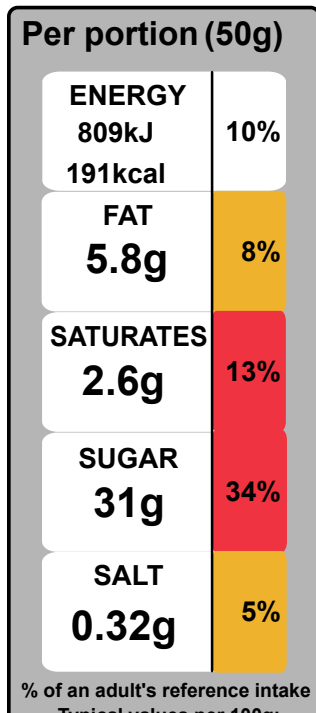
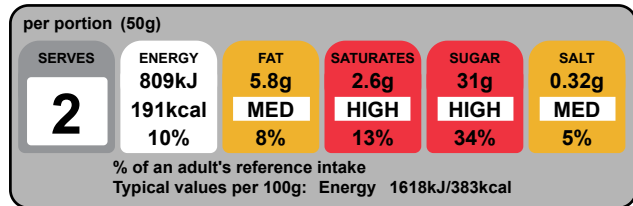
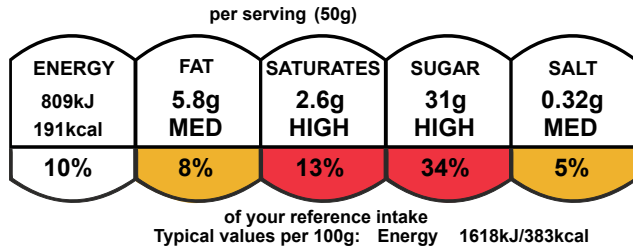
Pack Size

Pack size	100.0g
Number of servings	2

Nutrients

	per 100g	per 50 g serving
Energy	1617.5kJ	808.8kJ
Energy	382.6kcal	191.3kcal
Fat	11.6g	5.8g
of which saturates	5.2g	2.6g
Carbohydrate	70.2g	35.1g
of which sugars	61.9g	31.0g
Added Sugar	44.5g	22.3g
Fibre	0.0g	0.0g
Protein	0.4g	0.2g
Salt	0.63g	0.32g
Sodium	249.2mg	124.6mg

Graphics



Typical values per 100g:
Energy 1618kJ/383kcal

per portion (50ml)

ENERGY	FAT	SATURATES	SUGAR	SALT
809kJ 191kcal	5.8g HIGH	2.6g HIGH	31g HIGH	0.32g MED
10%	8%	13%	34%	5%

of your reference intake
Typical values per 100ml: Energy 1618kJ/383kcal

per portion (50ml)

SERVES	ENERGY	FAT	SATURATES	SUGAR	SALT
2	809kJ 191kcal 10%	5.8g HIGH 8%	2.6g HIGH 13%	31g HIGH 34%	0.32g MED 5%

% of an adult's reference intake
Typical values per 100ml: Energy 1618kJ/383kcal

Per portion (50ml)

ENERGY 809kJ 191kcal	10%
FAT 5.8g	8%
SATURATES 2.6g	13%
SUGAR 31g	34%
SALT 0.32g	5%

% of an adult's reference intake
Typical values per 100g:
Energy 1618kJ/383kcal

Typical values	per 100g	per 50g serving
Energy	1618kJ 383kcal	809kJ 191kcal
Fat	12g	5.8g
of which saturates	5.2g	2.6g
Carbohydrate	70g	35g
of which sugars	62g	31g
Protein	0.4g	0.2g
Salt	0.63g	0.32g

Nutrition Facts

2 servings per container	
Serving size	2oz (50g)
Amount per serving	
Calories	190
% Daily Value	
Total fat	6g 7%

Saturated Fat	2.5g	13%
Trans Fat	0g	
Cholesterol	0mg	0%
Sodium	125mg	5%
Total Carbohydrate	35g	13%
Dietary Fiber	0g	0%
Total Sugars	31g	
Includes 22g Added Sugars		45%
Protein	0g	
Vitamin D	0.0mcg	0%
Calcium	9.7mg	0%
Iron	0.1mg	0%
Potassium	6.9mg	0%

*The % Daily Value (DV) tells you how much a nutrient in a serving of food contributes to a daily diet. 2,000 calories a day is used for general nutrition advice.

Nutrition Facts

2 servings per container
Serving size 2oz (50g)

Amount per serving
Calories 190

% Daily Value*

Total fat	6g	7%
Saturated Fat	2.5g	13%
Trans Fat	0g	
Cholesterol	0mg	0%
Sodium	125mg	5%
Total Carbohydrate	35g	13%
Dietary Fiber	0g	0%
Total Sugars	31g	
Includes 22g Added Sugars		45%
Protein	0g	

Vit. D 0.0mcg 0% • Calcium 9.7mg 0%
Iron 0.1mg 0% • Potas. 6.9mg 0%

*The % Daily Value (DV) tells you how much a nutrient in a serving of food contributes to a daily diet. 2,000 calories a day is used for general nutrition advice.

Nutrition Facts		Amount / serving	% Daily Value*	Amount / serving	% Daily Value*
2 servings per container		Total fat	6g 7%	Total Carbohydrate	35g 13%
Serving size		Saturated Fat	2.5g 13%	Dietary Fiber	0g 0%
2oz (50g)		Trans Fat	0g	Total Sugars	31g
Calories		Cholesterol	0mg 0%	Includes 22g Added Sugars	45%
per serving 190		Sodium	125mg 5%	Protein	0g
		Vitamin D	0.0mcg 0%	Calcium	9.7mg 0%
		Iron	0.1mg 0%	Potassium	6.9mg 0%
		Thiamin	0%	Riboflavin	1%
				Niacin	0%

*The % Daily Value (DV) tells you how much a nutrient in a serving of food contributes to a daily diet. 2,000 calories a day is used for general nutrition advice.

Nutrition Facts		Amount / serving	% DV	Amount / serving	% DV
2 servings per container		Total fat	6g 7%	Total Carbohydrate	35g 13%
Serving size		Saturated Fat	2.5g 13%	Dietary Fiber	0g 0%
2oz (50g)		Trans Fat	0g	Total Sugars	31g
Calories		Cholesterol	0mg 0%	Incl. 0g Added Sugars	45%
per serving 190		Sodium	125mg 5%	Protein	0g
		Vitamin D	0%	Calcium	0%
		Iron	0%	Potassium	0%

PER 2oz (50g) SERVING

190 CALORIES	2.5g SAT FAT 13% DV	125mg SODIUM 5% DV	31g SUGARS 5% DV
------------------------	----------------------------------	---------------------------------	-------------------------------

190

Calories



Ingredients and Allergens

Sugar, Glucose, **Soya** Milk, Palm Oil, Fondant Icing (**Egg**), Vegan Margarine (Vegetable Oil, Water, Emulsifier), Demerara Sugar, Glycerine, Caramel Flavouring, Salt, Soy Lecithin.

Allergen advice. For allergens, including cereals containing gluten, see ingredients in **bold**.

44.5%	22.3g	Sugar, white
19.1%	9.54g	Glucose liquid, BP
9.89%	4.95g	Milk, soya, non-dairy alternative to milk, unsweetened, fortified
7.92%	3.96g	Oil, palm
7.92%	3.96g	Icing, fondant, homemade
4.45%	2.23g	Vegan Margarine
2.57%	1.29g	Sugar, Demerara
1.34%	0.668g	Glycerine
1.31%	0.653g	Caramel Flavouring
0.549%	0.275g	Salt
0.445%	0.223g	Soya Lecithin (emulsifier)

Notes